

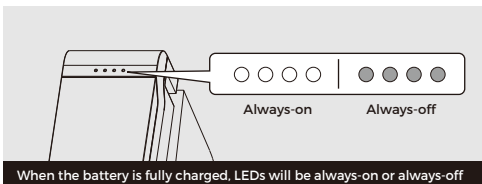
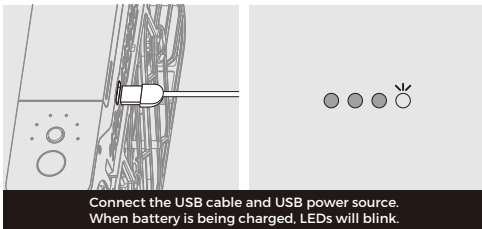
## Step 1 Download App

- Scan the QR code below to download and install Hover X1 App.  
\*This guide is subject to change without prior notice. Please visit our official website for user manual and other latest information.



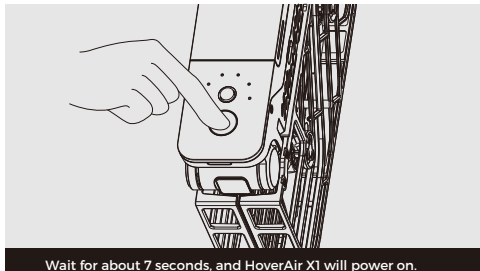
## Step 2 Charge the battery

- before you use HoverAir X1 for the first time, be sure to charge it.



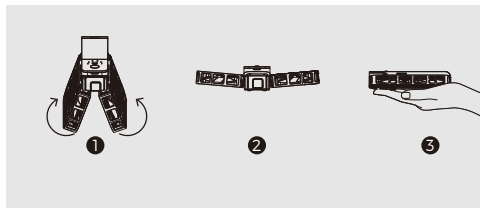
## Step 3 Power on

- Press and hold power button for 2 seconds until the voice prompt is heard, and the status indicator will light on in green.

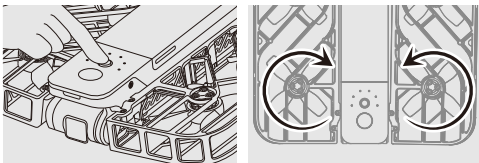


## Step 4 Mode Selection and Takeoff

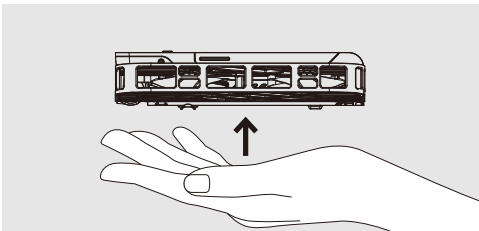
- Open up the HoverAir X1 as shown below and hold it flat in your palm.



- Short press the mode button (behind the power button) to select the flight mode of your choice. You can long press the mode button to toggle parameters for each flight mode.

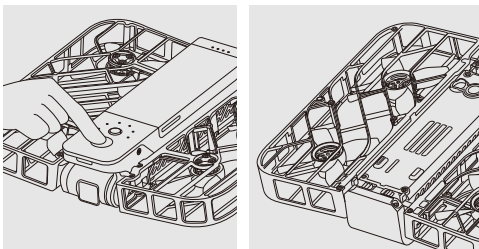


- Short press the power button to take off. Once the propellers have started spinning, remove your hand from under the device.



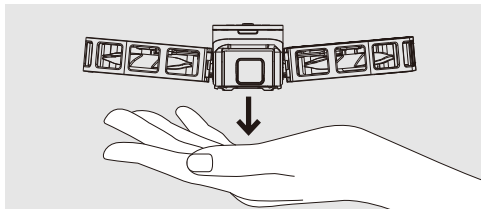
## Step 5 Palm Landing

- Grab the HoverAir X1 mid-flight and press the power button or flip it upside down 180 degrees to stop the propellers



propellers will stop spinning

- At the end of the flight or during continuous flight modes, place your hand 20cm below the device and it will automatically land in your hand and the propellers will stop spinning



- **Caution**



DO NOT stick fingers or anything else into the propeller area. Please refer to the safety instruction manual and disclaimer online for more information.

## Step 6 Connecting to the app

- Open the Hover X1 App and enjoy flying HoverAir X1- Make sure your mobile device Bluetooth and WiFi are on. Connecting to the device is managed entirely from the app, there is no need to connect to your Hover via your mobile device settings.
- Open the Hover X1 app and select Hover-> "Click to activate/connect".
- You may be prompted to allow the app to access Bluetooth.
- Now you can use the app to change flight mode settings
- To download your media, select the "Album" icon. You will be prompted to connect to your Hover over WiFi